



Work Force Development Center

A Resource Center for our Future

Winter 2021 NEWSLETTER



STUDENT'S CORNER

I heard about WFDC from my IEP Case Manager. She went into great detail about the program and told me that I can receive high school credit while gaining experience in the trade of Aerospace Mechanical Assembly, so I couldn't resist the opportunity. The employees at WFDC have been welcoming and very kind to me and the other students. I cannot stress enough how much they make me feel like an equal and have amazing patience when it comes to learning the proper terms, tools and methods of riveting. My future plans after high school are to work for an aerospace company somewhere on the west coast, furthering my experience and credentials until I am able to work for Boeing.

Matthew L. – Mountlake Terrace High School – October 2021 Trainee of the Month

WHAT'S NEW AT WFDC

NOVEMBER

TIMKEN

On behalf of the WFDC Executive Board, staff and student trainees, we extend our profound and heartfelt gratitude for the generous grant award from The Timken Company Charitable and Educational Fund. The Timken Fund invests in organizations that can deliver measurable results and sustainable improvements in the communities where Timken operates, including the Seattle metro area. Timken supports organizations providing the biggest community impact aligned with their focus areas of Education and Community Development. WFDC is proud to have garnered the support of the Timken Company Fund and welcome them to the WFDC family!

<https://www.facebook.com/timken/>

<https://www.timken.com/corporate-social-responsibility/>

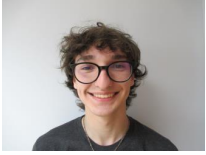
TOMORROW TUESDAY 11/30/2021 IS #GIVINGTUESDAY!



#GIVINGTUESDAY™

Whether it's doing an act of kindness, speaking out for a cause that matters to you, or donating to WFDC, every act of generosity counts and each means more when we give together. Get ideas for how to give back today at [GivingTuesday.org](https://www.givebigwa.org) and don't forget to share using hashtag #GivingTuesday!

<https://www.givebigwa.org/work-force-development-center>



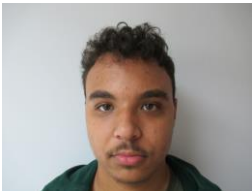
**October 2021
TRAINEE OF THE MONTH**

WFDC extends enthusiastic CONGRATULATIONS! To Matthew L. of Mountlake Terrace HS!

Matthew was selected as the WFDC Student Trainee of the Month for October 2021 based on work ethic and employee feedback.

Employees praise Matthew's work ethic and team work stating, "Matthew is a quick learner. He gets along with everyone in our area. He stays on task and asks questions when needed." "Matthew is a wonderful citizen and demonstrates superlative work ethic. He is kind and positive every day – expressing great interest in what he is doing and helping those around him. In the classroom, he did not hesitate to help the other students and has already made a wonderful first impression on the mechanics with whom he is working. He is earnest and is a joy to work with – we are glad he is a member of the WFDC Program."

CONGRATULATIONS Matthew!



**November 2021
TRAINEE OF THE MONTH**

WFDC extends enthusiastic CONGRATULATIONS! To Chaz B. of Stanwood HS!

Chaz was selected as the WFDC Student Trainee of the Month for November 2021 based on work ethic and employee feedback.

Employees praise Chaz's work ethic and team work stating, "Chaz is a hard worker that always makes sure he does his work carefully." "Chaz participated eagerly in the classroom - asking questions when appropriate and participating in discussions. He has a positive attitude every day and is eager to learn more. Chaz is kind and a team player"

CONGRATULATIONS Chaz!





WHERE ARE THEY NOW?

WFDC and [Mountlake Terrace High School](#) Graduate Gabe P. shipped out Monday 10/4/21 to begin his career with the US Army in Air Defense Artillery. We are so very proud of Gabe! [Seattle MEPS, 5th Battalion, US Military Entrance Processing Command](#) [Mountlake Terrace High School](#)

Did you know you can help at risk youth learn job skills simply by using Bing for your next online search? You can search on Bing and support [Work Force Development](#) Student Trainees at the same time! Make sure to choose WFDC as your charity and donate your Microsoft Rewards to a great cause. Learn more about [#GivewithBing](#) by clicking the link: <https://buff.ly/39nCFnl>



#GIVewithBING
bing.com/give



11/13/21 Edmonds School District High School Student of the Month for October 2021!

WFDC Trainee Angel H. was featured in the Edmonds News today. <https://myedmondsnews.com/2021/11/edmonds-school-district-high-school-students-of-month-for-october-2021/>

WFDC SAFETY ZONE

Please join us in congratulating WFDC Employee Caitlin H. who has won the “Safe at WFDC” award for October.

Caitlin placed a safety suggestion in the suggestion box, which was implemented by the Safety Committee. As a result, she won a gift card and was recognized at our Monthly Staff Safety Training. We appreciate all suggestions, demonstrating commitment to safety and care for our trainees and colleagues.



WAYS TO GIVE TO WFDC

Want to make an impact for at risk youth of the North Puget Sound Region? Consider supporting WFDC by purchasing items for our student trainees on smile.amazon.com. WFDC now has a Charity Wish List of items our students need every single day.



You can purchase these items on the link below and they will be shipped directly to WFDC.

https://smile.amazon.com/.../17LNI.../ref=smi_ext_lnk_lcl_cl

+++++

The car you're not using anymore has seen a lot of sunsets. You can get rid of that vehicle you no longer need - and they say you get what you give - so give what you can to the nonprofit that supports youth in your community. WFDC accepts support however we can, including vehicle donations. Donating is easy, free, and you may even qualify for a tax deduction.

Call **855-500-RIDE (7433)** or give online at

<https://www.careasy.org/nonprofit/work-force-development-center>

Turn Your Used Car Into Cash For Our Nonprofit

Give your used vehicle new purpose when you donate it to the cause you care about.



The process is easy, and we provide free pick-up whether it's running or not. The following are basic requirements for donating a vehicle.

- 1) Vehicle has a clear title.
- 2) Vehicle is in one piece and towable but does not need to be running.
- 3) Vehicle is tow truck accessible.

+++++

YOU CAN HELP WORK FORCE DEVELOPMENT CENTER EARN DONATIONS JUST BY SHOPPING WITH YOUR FRED MEYER REWARDS CARD!

• Sign up for the Community Rewards program by linking your Fred Meyer Rewards Card to WFDC at

<https://www.fredmeyer.com/i/community/community-rewards>



You can search for us by our name or by our non-profit number LR114.

• Then, every time you shop and use your Rewards Card, you are helping WFDC earn a donation!

11/19/21 WFDC Annual Thanksgiving Feast

WFDC Staff and Student Trainees enjoyed our annual Thanksgiving Feast with all safety protocols in place! Our CEO Dave, prepared smoked turkeys and deep-fried turkeys, as well as corn, green beans, mashed potatoes and gravy, rolls, cranberry sauce, apple and pumpkin pies and sparkling cider. The food was wonderful and enjoyed by all!



TOMORROW IS #GivingTuesday!



#GIVINGTUESDAY™

<https://www.givebigwa.org/work-force-development-center>

Whether it's doing an act of kindness, speaking out for a cause that matters to you, or donating to WFDC, every act of generosity counts and each means more when we give together. Get ideas for how to give back today at [GivingTuesday.org](https://www.givingtuesday.org) and don't forget to share using hashtag #GivingTuesday!

WFDC appreciates collaborating with the following schools and districts to support our 2021-2022 shared students' growth and job skill acquisition:



Mukilteo School District



SNOHOMISH COUNTY

ARLINGTON

Arlington HS – 2 trainees

STANWOOD

Stanwood HS – 4 trainees
Lincoln Hill HS – 1 trainee

EDMONDS

Lynnwood HS – 1 trainee
Mountlake Terrace HS – 2 trainees

MUKILTEO

Mariner HS – 1 trainee

GRANITE FALLS

Granite Falls HS – 2 trainees

SNOHOMISH

Snohomish HS – 1 trainee

KING COUNTY

SHORELINE

Shorewood HS – 2 trainees

David Trader
CEO
(425) 349-1800 x 201
davetrader@wfdcenter.org

Carmela Morelli
Director of Student Services
Safety Coordinator
Grant Writer
(425) 349-1800 x 205
carmelamorelli@wfdcenter.org

WFDC MANAGEMENT TEAM

Demar Holtz
Director of QA
(425) 349-1800 x 207
demarholtz@wfdcenter.org

Greg Hill
Director of Wire Operations
(425) 349-1800
greghill@wfdcenter.org

Scott Kneeland
Director of Assy/CNC Operations
(425) 349-1800 x 202
scottkneeland@wfdcenter.org

Darrin Haase
Director of HR
(425) 349-1800 x 250
darrinhaase@wfdcenter.org

Andrew Vuong
Director of Business Dev.
(425) 349-1800 x 204
Andrewvuong@wfdcenter.org

BOARD OF DIRECTORS

Brian Pulk – President
Board Service Since 2012
Michael McMurray – Vice President
Board Service since 2015
Vicky Hopper – Secretary
Board Service Since 2008
Clark Johnson - Treasurer
Board Service Since 2012
Daryl Connite
Board Service Since 2012
Kim Larsen-Rider
Board Service since 2015
Larry Springer
Board Service since 2018
Crystal Fry
Board Service Since 2020

CONNECT WITH WORK FORCE DEVELOPMENT CENTER

<http://www.donorschoose.org/WorkForceDevelopmentCenter>
<https://www.facebook.com/WorkForceDevelopmentCenter>
<https://careasy.org/nonprofit/work-force-development-center>

<http://www.wfdcenter.org/index>
<http://smile.amazon.com/ch/91-1518808>